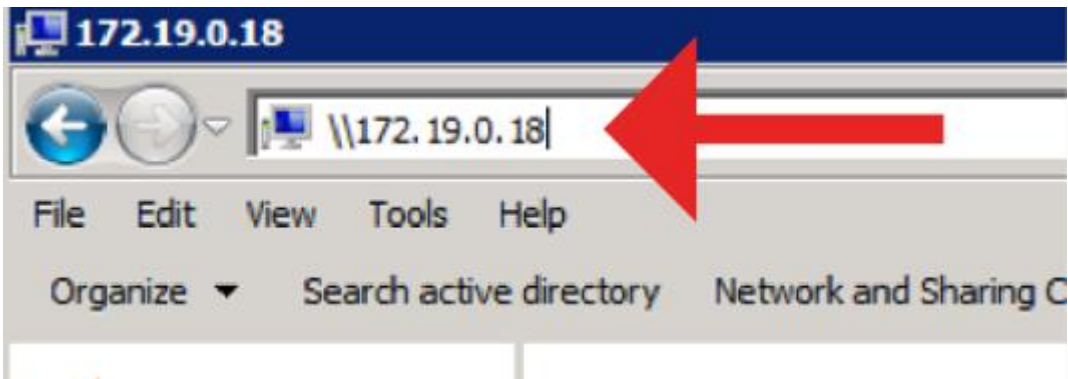


Windows Printer Installation

Only works for Windows

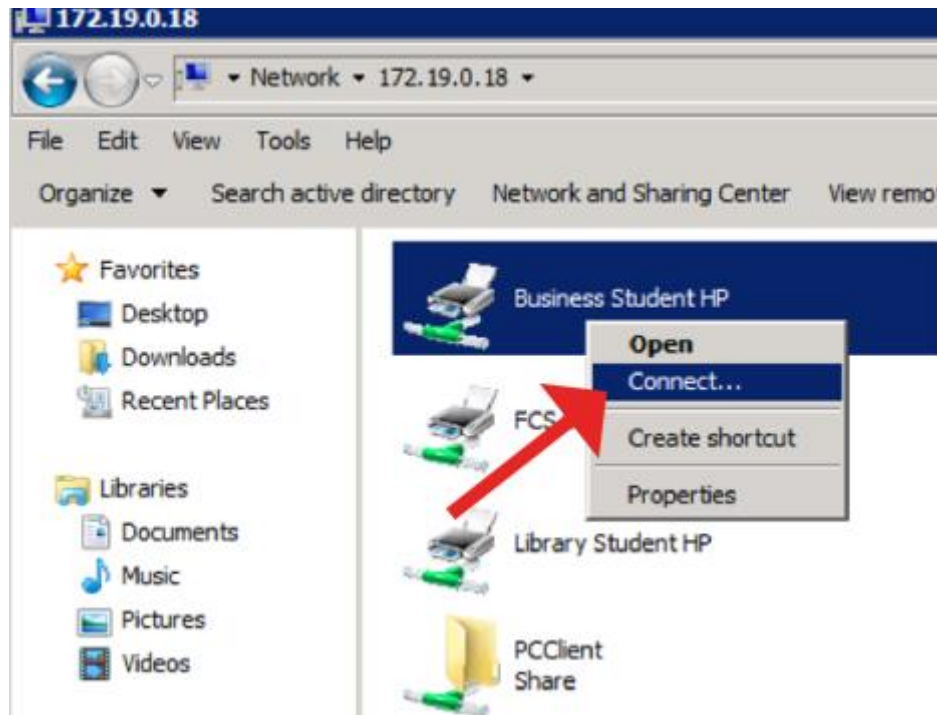
1. Open a Windows Explorer window (click the folder icon on the task bar or press "Windows+E").
2. In the address bar at the top of the screen, type \\172.19.0.18 and hit enter.
You must use the backslash symbol (\). Generally located above the Enter key.



3. Enter your Master's U username, with **MASTERS** preceding your username. Then enter your password. Check the **Remember My Credentials** box and click **OK**.



4. Right click on the printer you wish to connect to and select **Connect**.



5. You may see a prompt asking if you want to install a driver for this printer. Click **Yes** or **Install**.

Your printer is now installed! If you would like to install another printer, repeat these instructions. If you have any questions or problems installing the printers, email the IT Service Desk at servicedesk@masters.edu.